

PWA6670 Front Mount intercooler kit is for all Turbo Diesel Mazda BT50
Ford Ranger 2004 on.

NB: For models 2004-2007 trimming of the inner grill is required.

Tools required

10mm Ratchet Socket with extension
Medium Philips Screw Driver
Medium Blade Screw Driver
2"Pipe cutter device



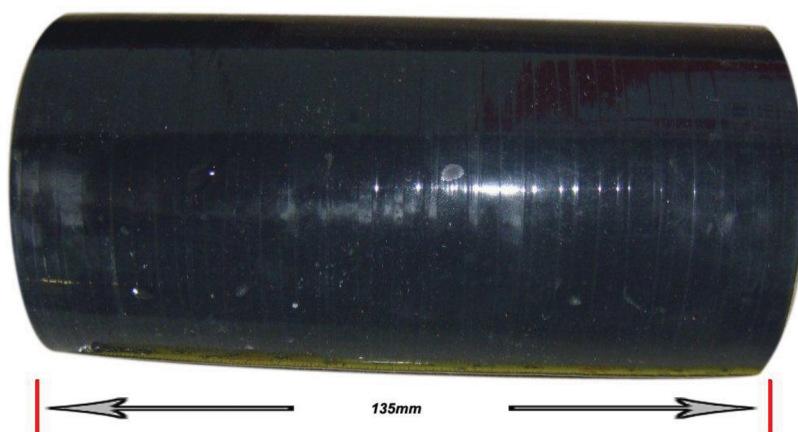
Items in the Kit:

1x PWR PWA6670 Front Mount Intercooler as above
(Black or Polished finish)

1x PWR Silicon hose 2" dia 90Deg Bend 125mm and 50mm from bend



1x PWR Silicon Hose 2" dia Straight cut at 135mm



All Bolts and clamps to be used in the fitment of the PWR intercooler are from the original Mazda/Ford intercooler

Remove upper grille with 4 Rivets at top of grille area and 5 clips attaching to top of front bar.

Undo the 4 original Intercooler hose clamps and remove.
Undo and remove the stock intercooler & its mounting bracket.

Following the passenger side boost pipe through the left hand head light panel & undo the 2 x 10mm nuts to release this pipe from its mounts.

Loosen the remaining hose clamp on this pipe that joins to the rubber engine bay hose leading to Turbo. Remove pipe from the vehicle.



With a rag, mount this pipe in a vice and proceed to cut approx 140mm off the pipe, leaving 40mm remaining of flared section. Remove any sharp edges or debris from the cut.



Ensuring the pipe is clean inside and out, it can now be refitted.

Placing the "PWR silicon hose straight cut at 135mm" onto the passenger side outlet of the new PWR intercooler, commence to position the PWR intercooler into the front area of vehicle via the top grille opening.

NB: For models 2004-2007 trimming of the inner grill is required.

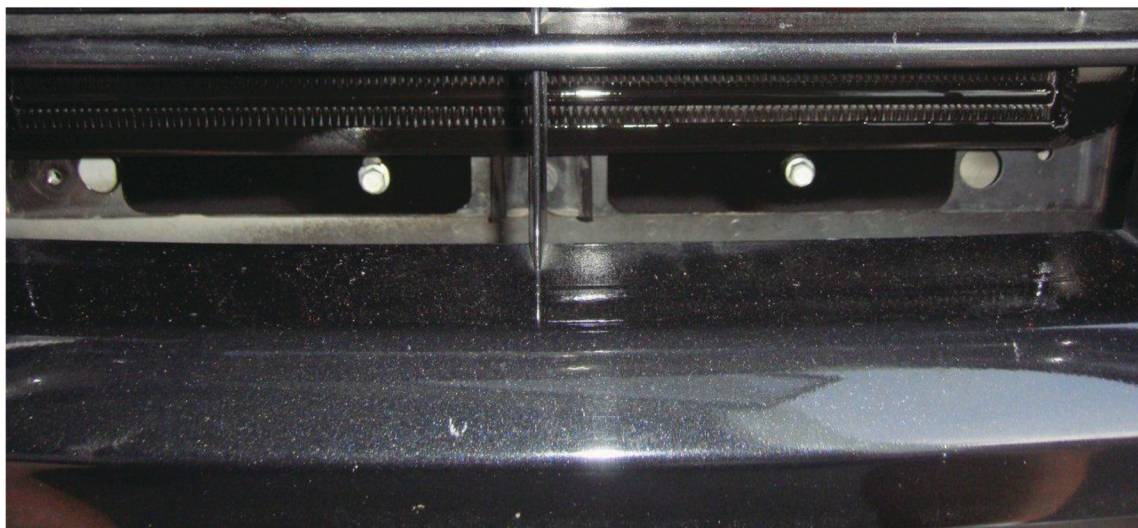
While lowering the PWR Intercooler into position be sure to align the "PWR Silicon Hose Straight Cut at 135mm Hose" onto the passenger trimmed passenger side boost pipe



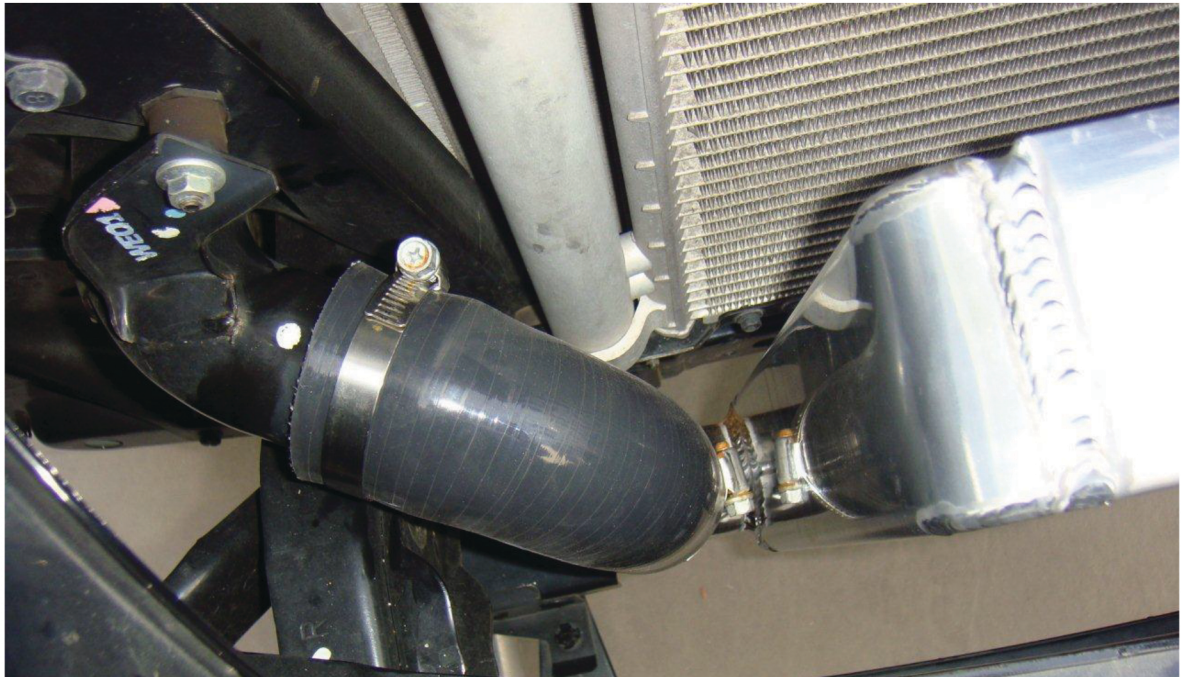
Holding the PWR Intercooler into position use a M6 Bolt and M6 Nut (from the original intercooler) and to secure to the top of the new intercooler to the vehicle vertical lock panel. The new intercooler will now be stable to hang on its own temporarily.



Proceed to align the 2x bottom mount holes with the factory chassis mount points, using 2 x m6 bolts from the original equipment Intercooler. Ensure the intercooler is level prior to fully tightening.



Proceed to fit the "PWR Silicon hose 90Deg bend 125mm and 50mm from bend" to the driver's side intercooler pipe. This driver's side pipe does not require modification and is left standard.



Proceed to refit clamps and tighten, proceed to secure the passenger side hose clamps also.

Double check bolts are tight.
Double check all hose clamps are tight
Refit the grille in reverse order to removal



Fitment is complete.